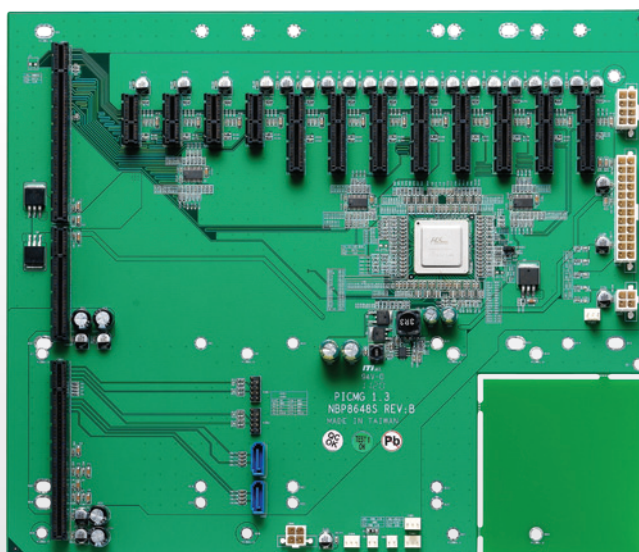


NBP 8648S

14-Slot Backplane for 4U Chassis with 1 SHB Slot,
4 x PCIe x1 and 8x PCIe x4



Main Features

- Greater Powers Delivery Capability, Supports High Performance System Host Board and Add-on Card
- Supports 4 x PCIe x1 and 8x PCIe x4
- Follows PICMG 1.3 Mount Holes and Compatible with GuangHsing's 4U Chassis
- Supports ATX/BTX Power Supply
- Compliance with PEAK 877VL2, PEAK 886VL2, PEAK 887VL2

Product Overview

The NBP 8648S is a 14-slot backplane for 4U chassis with 1 SHB slot, 4 x PCIe x1 and 8x PCIe x4 slots. It follows PICMG 1.3 platform specifications and supports ATX power supply.

Specifications

System Architecture

- 14-slot backplane

Dimension

- 317mm(L) x 274mm(W)(12.4" x10.7")

Slots

- 4 x PCIe x1 and 8x PCIe x4

I/O Interface

- 4 x USB 2.0 with 2 x 9 pin-header
- 2 x SATA
- 4 x 3-pin FAN
- 2 x 2-pin FAN

Power Input

- 1 x 24-pin power connector

Power Output

- 1 x 4-pin 12V AUX power connector to SBC/SHB

Environment

- Operating temperature: 0°C to 60°C
- Storage temperature: -20°C to 80°C
- Relative humidity: 10% to 90% (Non-condensing)

Certifications

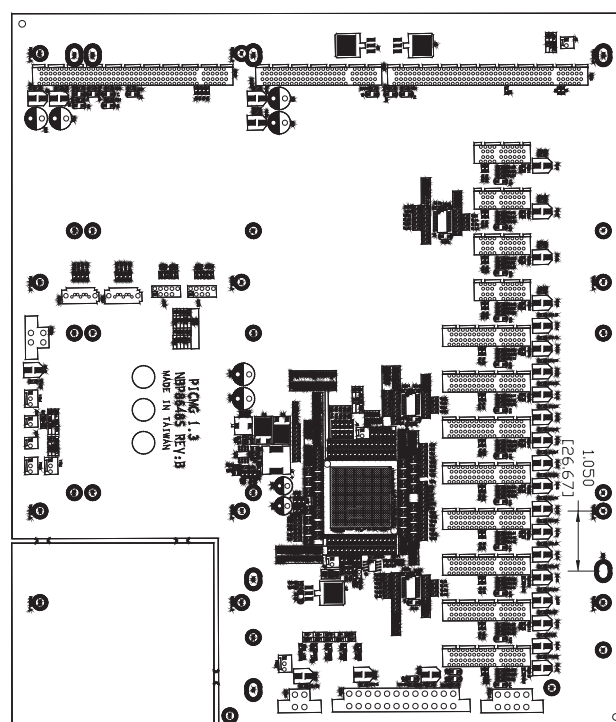
- CE approval
- FCC Class A

Ordering Information

- **NBP 8648S (P/N: 79N8648S00X00)**

PICMG 1.3 14-slot backplane for 4U chassis w/ 1 x SHB slot, 4 x PCIe x1 and 8 x PCIe x4

Dimension Drawing



www.nexcom.com



Passive Backplanes PICMG 1.3

We reserve the right to change specifications and product descriptions at any time without prior notice.

Last update: 08/23/2013